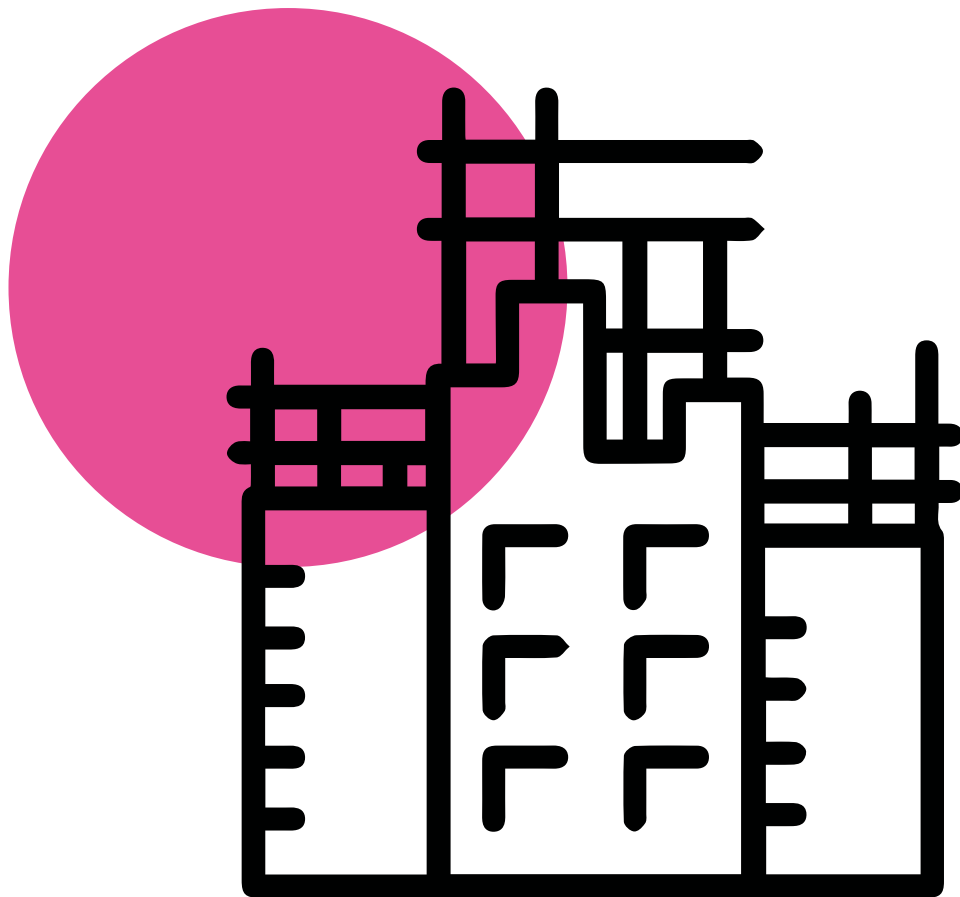


gipfer

Protective antioxidant for irons
reinforcement in the rehabilitation
intervention of concrete

POWDER AND PASTE



CHEMICAL ADDITIVES



gipsos
LA NATURA NEL COSTRUIRE

Gipfer

Protective antioxidant for irons reinforcement in the rehabilitation intervention of concrete

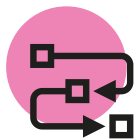


TECHNICAL FEATURES



Theoretical consumption	g./ml 150 on rod of 12
Relative humidity of the environment	80% max
Cleaning	Soap and water after use
Overlap time	2-3 hours between each wipe
Mixing only water	0,20 – 0,25 for kg. of powder
Mixture life	about 60 min. (at 20°C)
Mixture ph	=> 12,5

Laboratory tests performed at + 20 ° C and R.H. 65%, data subject to variations in different atmospheric and installation conditions.



METHOD OF USE

POWDERED

The reinforcement bars must be brought out , removing the rust that surrounds them, by mechanical brushing, or better yet, by sandblasting until reaching the original state of iron. Apply GIPFER with a brush in two coats, for a minimum thickness of mm. 1 per hand. Upon drying (about 6 hours to 20 seconds C) we suggest to use S.REPAIR for filling the missing parts.

LIQUID

Spread with a brush in two coats (1 mm per hand) and wait 2-3 hours between one hand and the other. At complete drying (6 hours) restore the missing parts with S.REPAIR.



WARNINGS

Do not apply with ambient relative humidity above 80%.
Do not apply on obviously damp media.
Do not apply at temperatures below +5 °C or above +35 °C.
Keep the product in the original container, tightly closed, not exposed directly to sunlight or heat sources and must be reused within no more than 5 days.



PACKAGING

Bags of 1 Kg and 3 Kg.

The above information is to be considered indicative, non-binding and subject to change without notice.
Therefore the suitability of the product for the desired result must be verified by the user, who is fully responsible for its use.